



Massachusetts

Division of Marine Fisheries

SHELLFISH SANITATION AND MANAGEMENT

Growing Area Code: N9

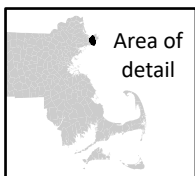
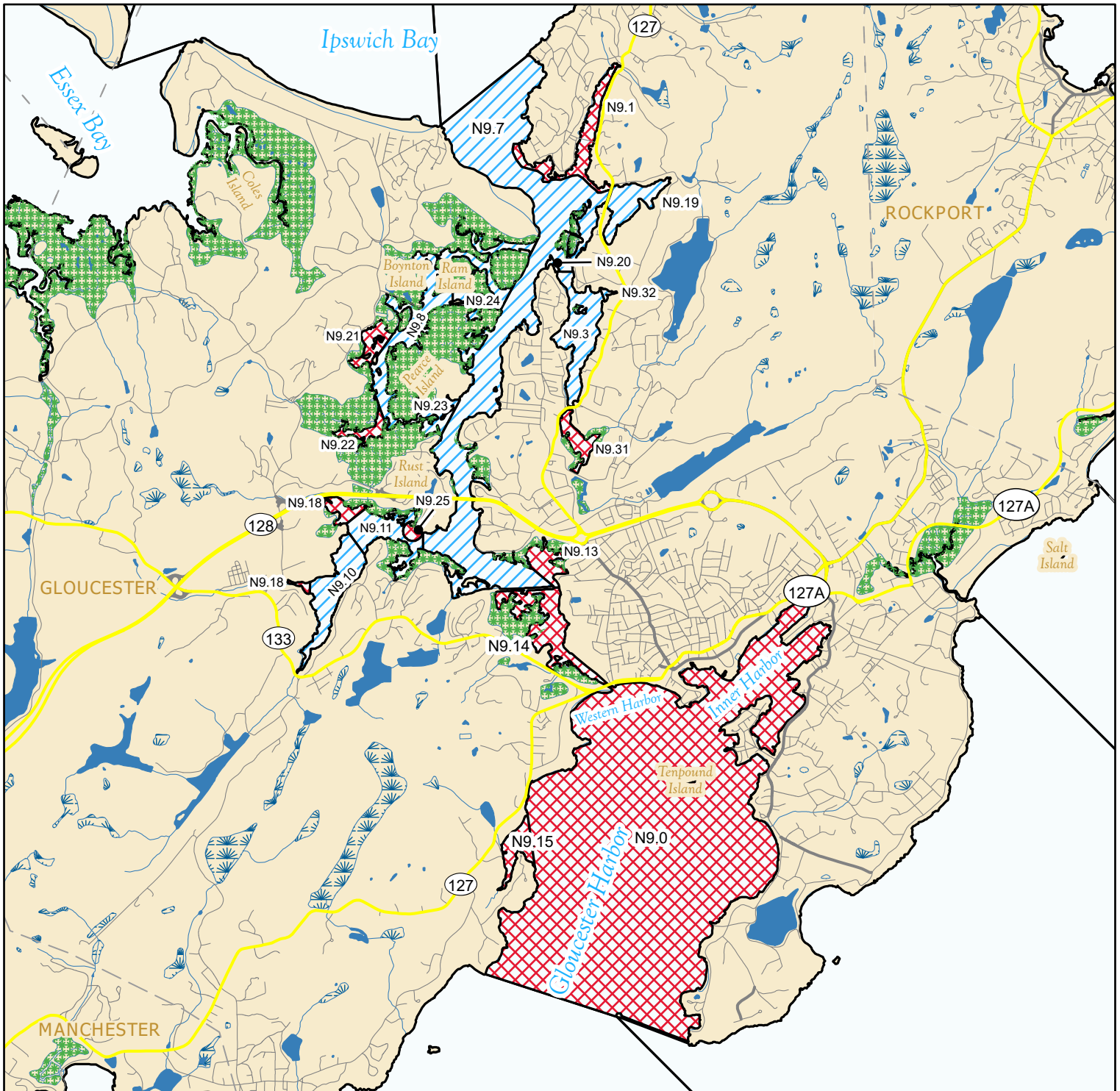
Area Name: ANNISQUAM RIV. GLOUCESTER HBR

Area Town(s): Gloucester

Shellfish Area Classification

	Approved		Conditionally Restricted
	Conditionally Approved		Prohibited
	Restricted		

Produced: 3/11/2024



Area of detail

This map depicts the Marine Fisheries' sanitary classification of shellfish growing waters in accordance with the National Shellfish Sanitation Program. It does not indicate the current status, either "open" or "closed" to harvesting due to shellfish management or public health reasons. Always confirm the status with local authorities and/or Marine Fisheries. Information on this map may be out-dated or otherwise incorrect, and should not be relied upon for legal purposes.

Marsh/Wetland Saltmarsh Pond/Lake/Reservoir
 Town Boundaries Stream/Ditch/Canal

0 0.5 1 miles
NORTH