



Massachusetts

Division of Marine Fisheries

SHELLFISH SANITATION AND MANAGEMENT

Growing Area Code: N7

Area Name: ESSEX BAY

Area Town(s): Essex, Gloucester, Ipswich

Shellfish Area Classification



Approved



Conditionally Restricted



Conditionally Approved

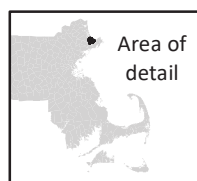
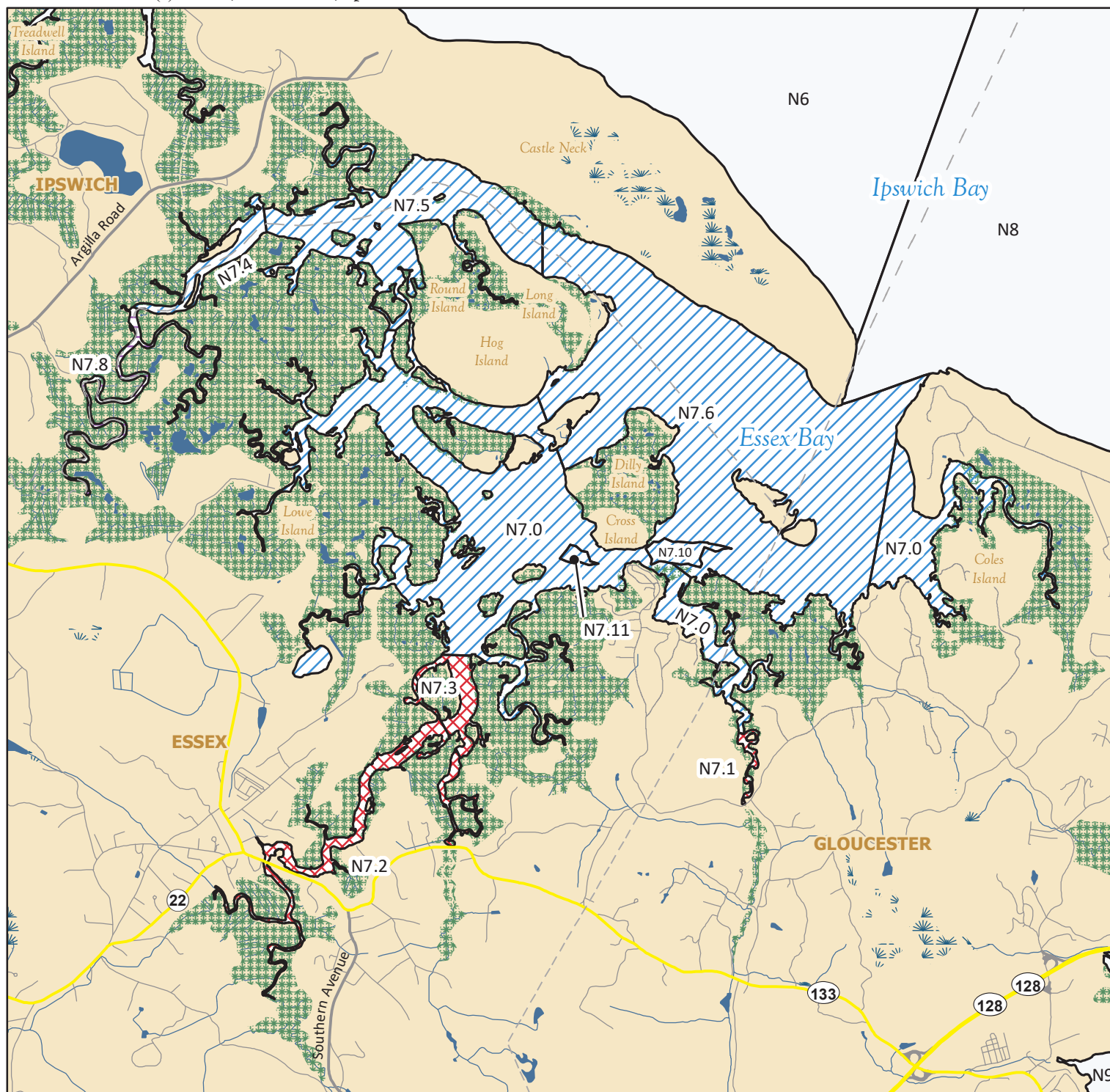


Prohibited



Restricted

Produced: 2/9/2021



Area of
detail

This map depicts the Marine Fisheries' sanitary classification of shellfish growing waters in accordance with the National Shellfish Sanitation Program. It does not indicate the current status, either "open" or "closed" to harvesting due to shellfish management or public health reasons. Always confirm the status with local authorities and/or Marine Fisheries. Information on this map may be out-dated or otherwise incorrect, and should not be relied upon for legal purposes.



Marsh/Wetland



Saltmarsh



Pond/Lake/Reservoir



Town Boundaries



Stream/Ditch/Canal



0

0.5

1

miles