



Growing Area Code: N3

Area Name: PLUM ISLAND

Area Town(s): Ipswich, Newbury, Newburyport, Rowley

### Shellfish Area Classification



Approved



Conditionally Approved



Restricted

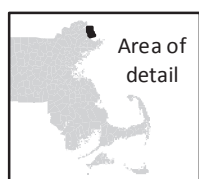
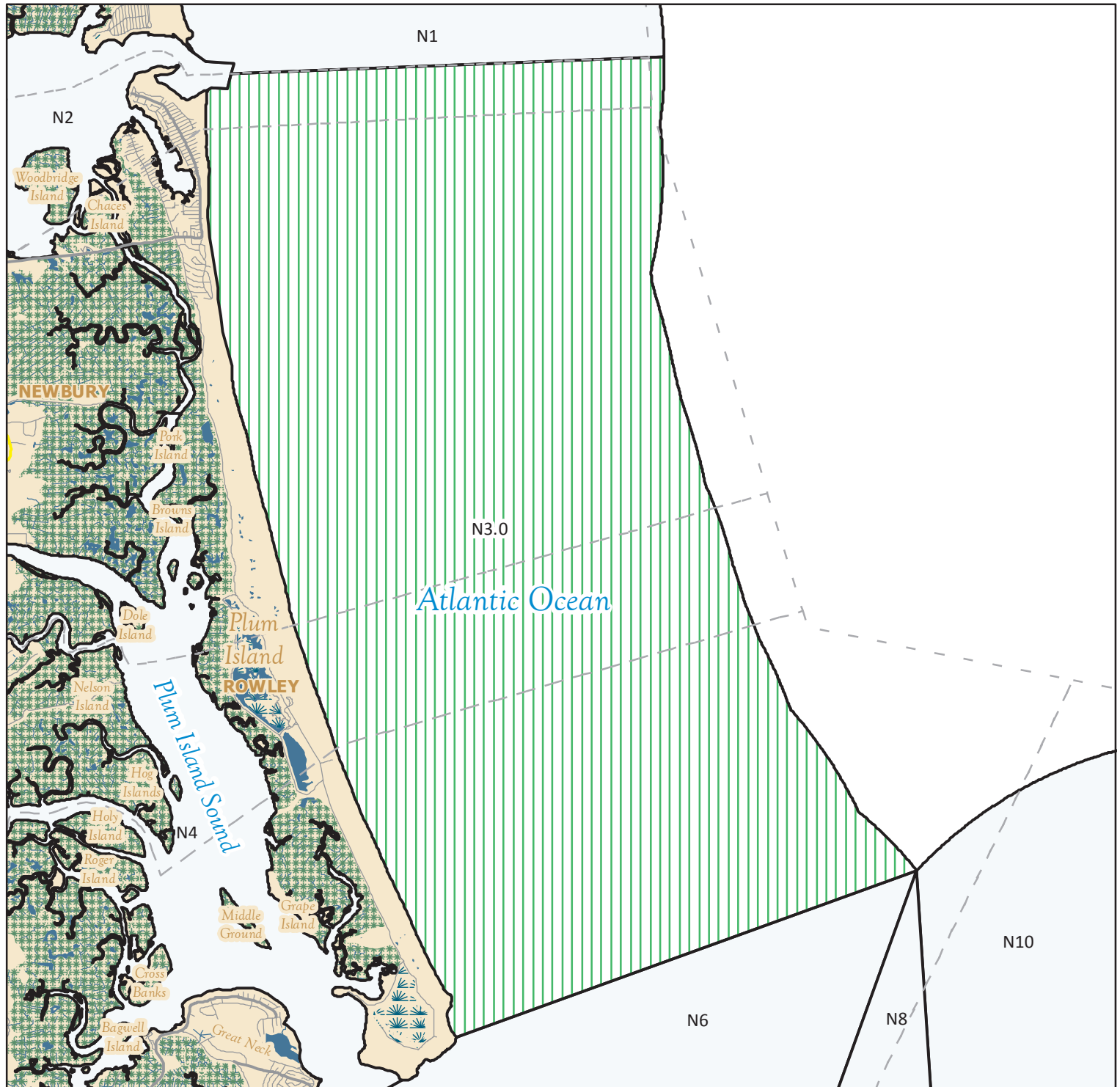


Conditionally Restricted



Prohibited

Produced: 8/19/2013



Area of  
detail

This map depicts the MarineFisheries' sanitary classification of shellfish growing waters in accordance with the National Shellfish Sanitation Program. It does not indicate the current status, either "open" or "closed" to harvesting due to shellfish management or public health reasons. Always confirm the status with local authorities and/or MarineFisheries. Information on this map may be out-dated or otherwise incorrect, and should not be relied upon for legal purposes.



Marsh/Wetland



Saltmarsh



Pond/Lake/Reservoir



Town Boundaries



Stream/Ditch/Canal

