



**Massachusetts**  
**Division of Marine Fisheries**  
 SHELLFISH SANITATION AND MANAGEMENT

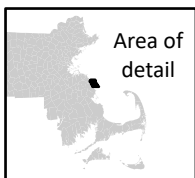
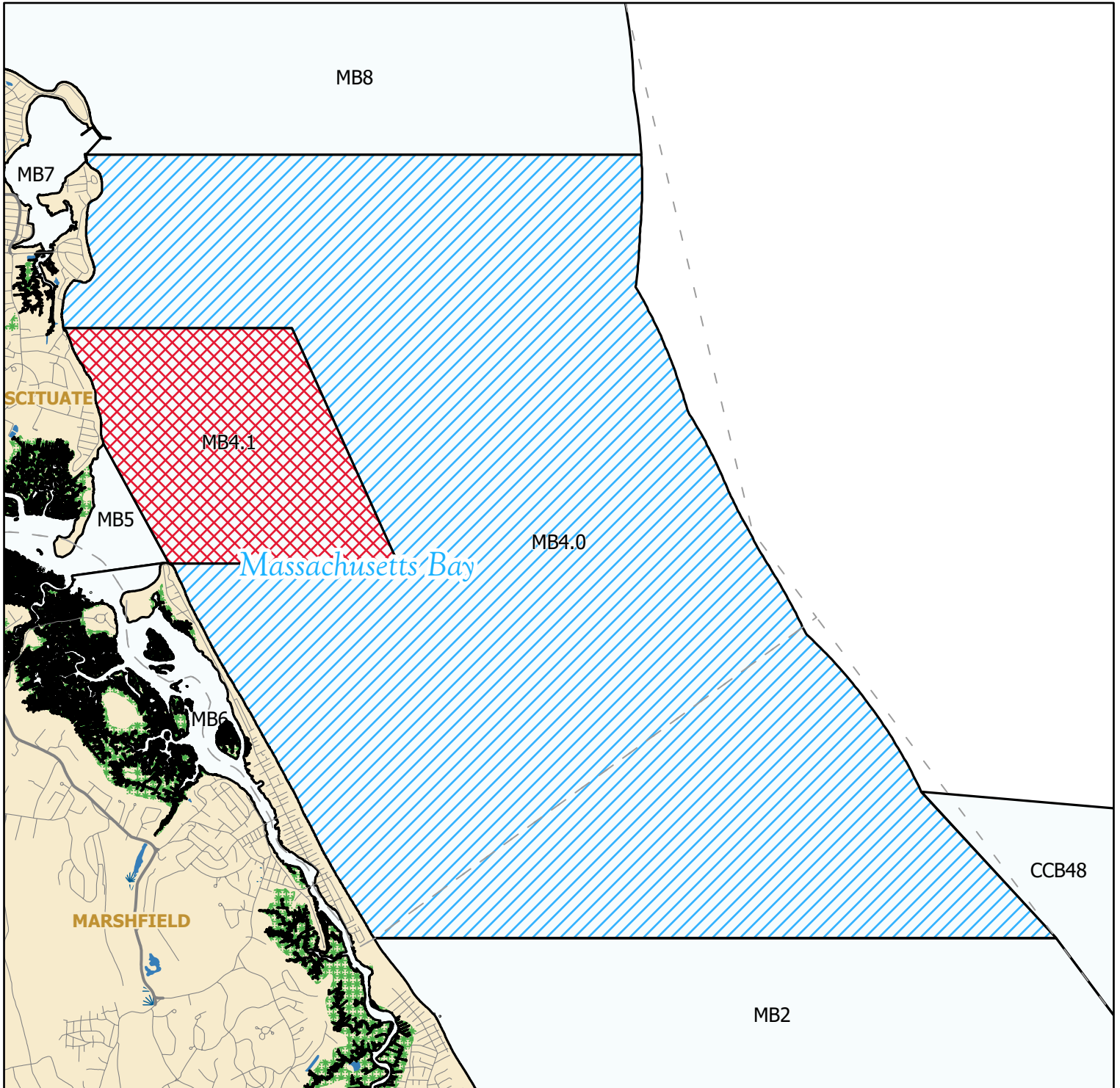
Growing Area Code: MB4

Area Name: Scituate South Coastal

Area Town(s): Marshfield, Scituate

**Shellfish Area Classification**

	Approved		Conditionally Restricted
	Conditionally Approved		Prohibited
	Restricted	Produced: 10/10/2024	



*This map depicts the Marine Fisheries' sanitary classification of shellfish growing waters in accordance with the National Shellfish Sanitation Program. It does not indicate the current status, either "open" or "closed" to harvesting due to shellfish management or public health reasons. Always confirm the status with local authorities and/or Marine Fisheries. Information on this map may be out-dated or otherwise incorrect, and should not be relied upon for legal purposes.*

- Marsh/Wetland
- Saltmarsh
- Pond/Lake/Reservoir
- Town Boundaries
- Stream/Ditch/Canal

