



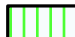




Massachusetts
Division of Marine Fisheries
 SHELLFISH SANITATION AND MANAGEMENT

Growing Area Code: E1

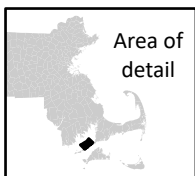
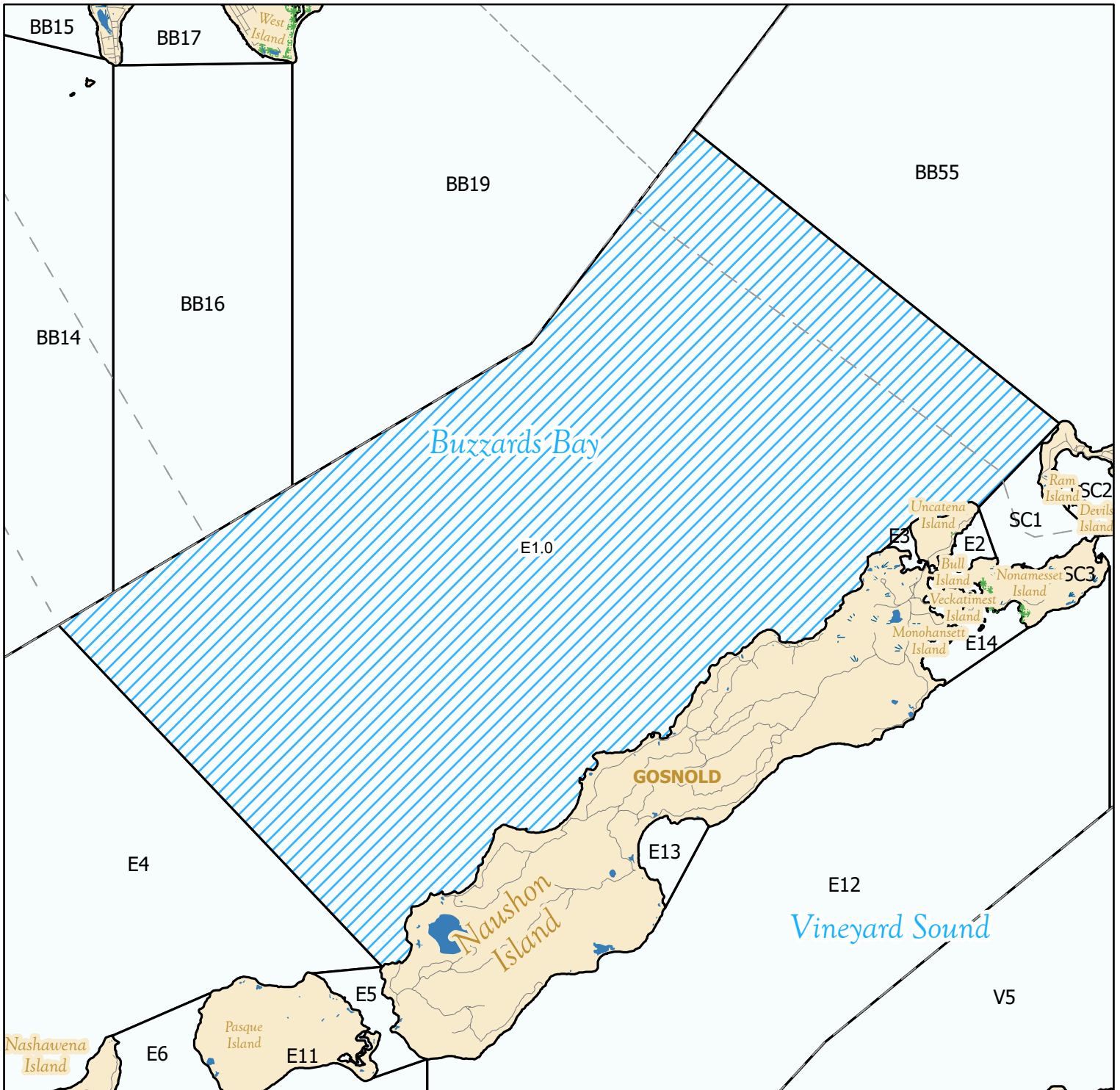
Area Name: NAUSHON ISLAND WEST COASTAL

Area Town(s): Falmouth, Gosnold

Shellfish Area Classification

 Approved	 Conditionally Restricted
 Conditionally Approved	 Prohibited
 Restricted	

Produced: 3/13/2024



This map depicts the Marine Fisheries' sanitary classification of shellfish growing waters in accordance with the National Shellfish Sanitation Program. It does not indicate the current status, either "open" or "closed" to harvesting due to shellfish management or public health reasons. Always confirm the status with local authorities and/or Marine Fisheries. Information on this map may be out-dated or otherwise incorrect, and should not be relied upon for legal purposes.

-  Marsh/Wetland
-  Saltmarsh
-  Pond/Lake/Reservoir
-  Town Boundaries
-  Stream/Ditch/Canal

