



Massachusetts
Division of Marine Fisheries
 SHELLFISH SANITATION AND MANAGEMENT

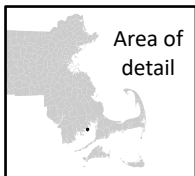
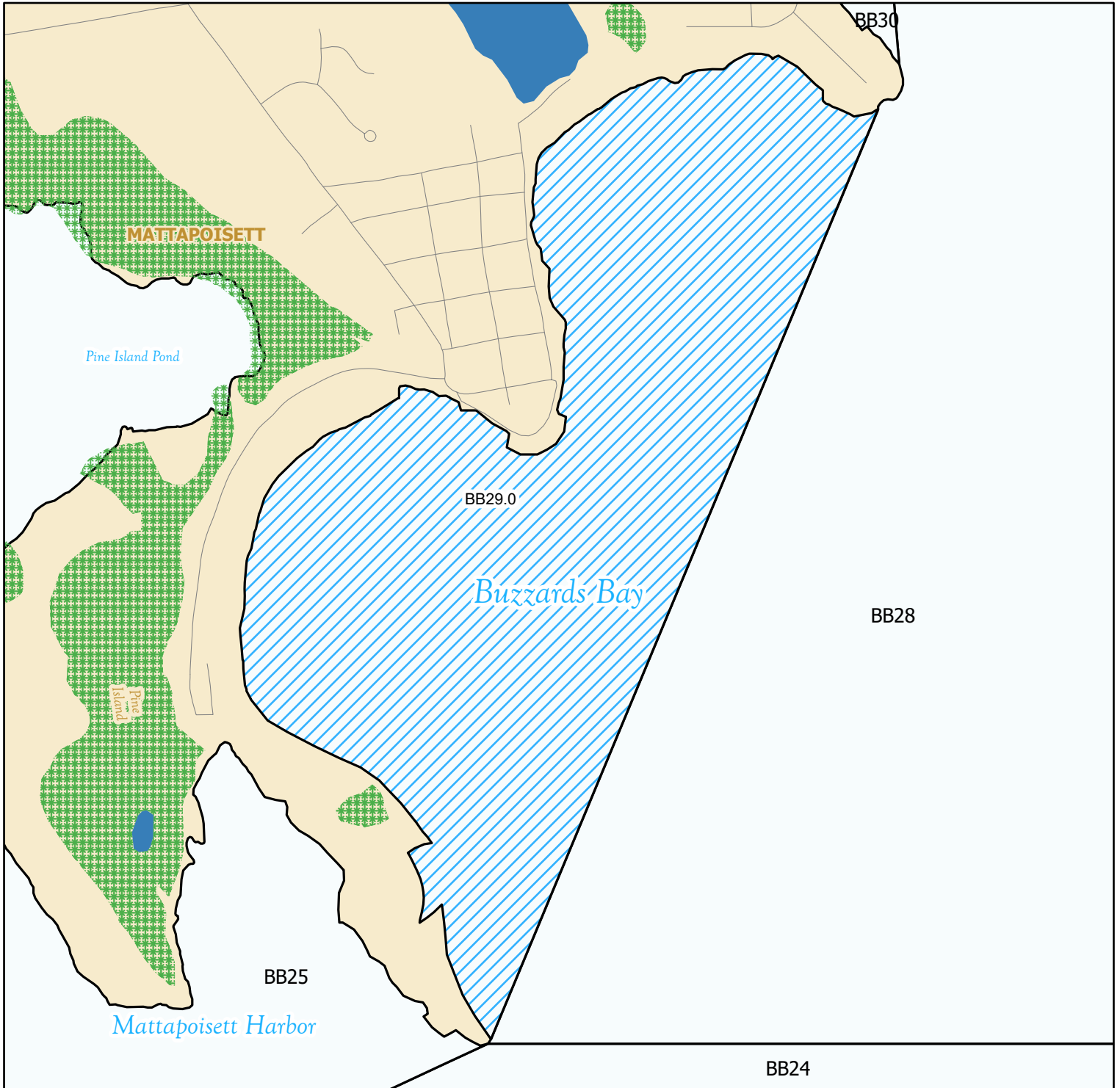
Growing Area Code: BB29

Area Name: POINT CONNETT

Area Town(s): Mattapoissett

Shellfish Area Classification

- | | |
|------------------------|--------------------------|
| Approved | Conditionally Restricted |
| Conditionally Approved | Prohibited |
| Restricted | Produced: 3/13/2024 |



This map depicts the Marine Fisheries' sanitary classification of shellfish growing waters in accordance with the National Shellfish Sanitation Program. It does not indicate the current status, either "open" or "closed" to harvesting due to shellfish management or public health reasons. Always confirm the status with local authorities and/or Marine Fisheries. Information on this map may be out-dated or otherwise incorrect, and should not be relied upon for legal purposes.

- Marsh/Wetland
- Saltmarsh
- Pond/Lake/Reservoir
- Town Boundaries
- Stream/Ditch/Canal

